

## anti- beta actin antibody

### Product Information

Catalog No.:	FNab00869
Size:	100 $\mu$ g
Form:	liquid
Purification:	Immunogen affinity purified
Purity:	$\geq$ 95% as determined by SDS-PAGE
Host:	Rabbit
IsoType:	IgG
Storage:	PBS with 0.02% sodium azide and 50% glycerol pH 7.3 , -20 $^{\circ}$ C for 24 months (Avoid repeated freeze / thaw cycles.)

### Background

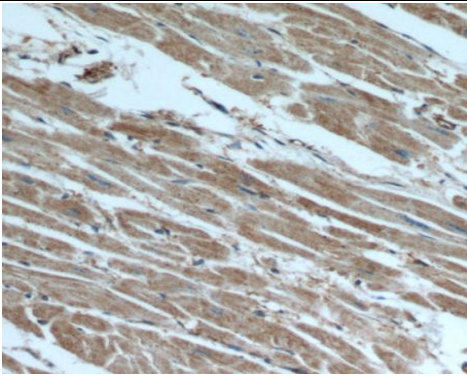
Beta actin, also named as ACTB and F-Actin, belongs to the actin family. Actins are highly conserved globular proteins that are involved in various types of cell motility and are ubiquitously expressed in all eukaryotic cells. At least six isoforms of actins are known in mammals and other vertebrates: alpha(ACTC1, cardiac muscle 1), alpha 1(ACTA1, skeletal muscle) and 2(ACTA2, aortic smooth muscle), beta(ACTB), gamma 1(ACTG1) and 2(ACTG2, enteric smooth muscle). Beta and gamma 1 are two non-muscle actin proteins. Most actins consist of 376aa, while ACTG2(rich in muscles) has 375aa and ACTG1(found in non-muscle cells) has only 374aa. Beta actin has been widely used as the internal control in RT-PCR and Western Blotting as a 42-kDa protein. However, the 41 kDa cleaved fragment of beta actin can be generated during apoptosis process. This antibody was generated against N-terminal region of human beta actin protein and can cross-react with other actins.

### Immunogen information

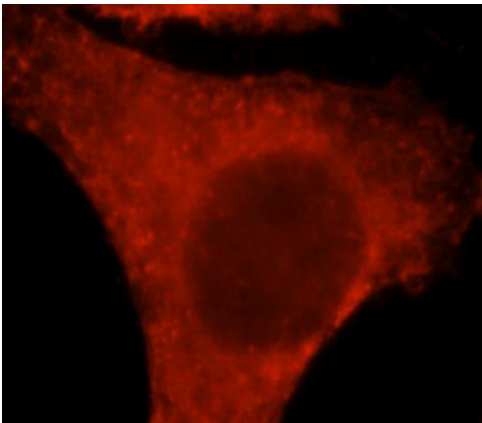
Immunogen:	actin, beta
Synonyms:	ACTB, Actin, actin, beta, Actin, cytoplasmic 1, B actin, Beta actin, F actin, $\beta$ actin
Calculated MW:	42 kDa
Uniprot ID :	P60709

### Application

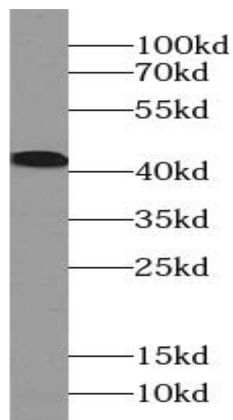
Specificity:	Human, Mouse, Rat; other species are not tested. Please decide the specificity by homology
Tested Application:	ELISA, IF, WB, IHC
Recommended dilution:	WB: 1:1000-1:10000; IHC: 1:20-1:500; IF: 1:10-1:100
Image:	



Immunohistochemical of paraffin-embedded human heart using FNab00869(ACTB antibody) at dilution of 1:100



Immunofluorescent analysis of HepG2 cells, using ACTB antibody FNab00869 at 1:25 dilution and Rhodamine-labeled goat anti-rabbit IgG (red).



C6 cells were subjected to SDS PAGE followed by western blot with FNab00869( beta actin Antibody) at dilution of 1:2000