

anti- IDO1 antibody

Product Information

Catalog No.:	FNab04127
Size:	100 μ g
Form:	liquid
Purification:	Immunogen affinity purified
Purity:	\geq 95% as determined by SDS-PAGE
Host:	Rabbit
IsoType:	IgG
Storage:	PBS with 0.02% sodium azide and 50% glycerol pH 7.3 , -20 $^{\circ}$ C for 24 months (Avoid repeated freeze / thaw cycles.)

Background

Catalyzes the first and rate limiting step of the catabolism of the essential amino acid tryptophan along the kynurenine pathway(PubMed:17671174). Involved in the peripheral immune tolerance, contributing to maintain homeostasis by preventing autoimmunity or immunopathology that would result from uncontrolled and overreacting immune responses(PubMed:25691885). Tryptophan shortage inhibits T lymphocytes division and accumulation of tryptophan catabolites induces T-cell apoptosis and differentiation of regulatory T-cells(PubMed:25691885). Acts as a suppressor of anti-tumor immunity(PubMed:23103127, PubMed:25157255, PubMed:14502282, PubMed:25691885). Limits the growth of intracellular pathogens by depriving tryptophan(PubMed:25691885). Protects the fetus from maternal immune rejection(PubMed:25691885).

Immunogen information

Immunogen:	indoleamine 2,3-dioxygenase 1
Synonyms:	CD107B, IDO, IDO 1, IDO1, INDO, indoleamine 2,3 dioxygenase 1
Calculated MW:	42 kDa
Uniprot ID :	P14902

Application

Specificity:	Human, Rat; other species are not tested. Please decide the specificity by homology
Tested Application:	ELISA, IHC, WB
Recommended dilution:	WB: 1:1000-1:4000; IHC: 1:50-1:500
Image:	



FineTest

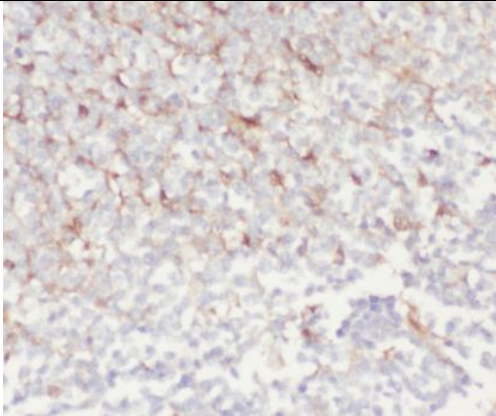
Wuhan Fine Biotech Co.,Ltd.

C6-323 Biolake, No. 666 Gaoxin Ave.

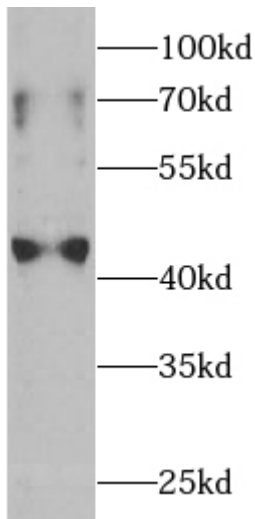
East Lake High-tech Development District

Wuhan City, Hubei, China (Zip code 430072)

Tel: 0086-027-87384275 Fax:0086-027-87800889



Immunohistochemistry of paraffin-embedded human tonsillitis tissue slide using FNab04127(IDO1 Antibody) at dilution of 1:100



Hela cells were subjected to SDS PAGE followed by western blot with FNab04127(IDO1 Antibody) at dilution of 1:2000