

## anti- IL-6 antibody

### Product Information

Catalog No.:	FNab04282
Size:	100 $\mu$ g
Form:	liquid
Purification:	Immunogen affinity purified
Purity:	$\geq$ 95% as determined by SDS-PAGE
Host:	Rabbit
IsoType:	IgG
Storage:	PBS with 0.02% sodium azide and 50% glycerol pH 7.3 , -20 $^{\circ}$ C for 24 months (Avoid repeated freeze / thaw cycles.)

### Background

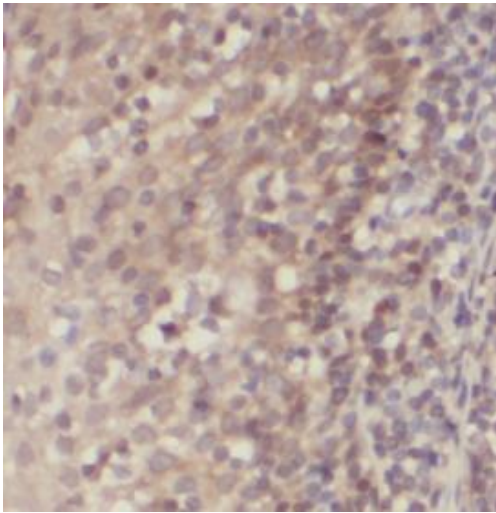
Interleukin-6(IL-6) is an interleukin that acts as both a pro-inflammatory and anti-inflammatory cytokine. IL-6 protein is secreted by a variety of cell types including T cells and macrophages as phosphorylated and variably glycosylated molecule. IL-6 Plays an essential role in the final differentiation of B-cells into Ig-secreting cells involved in lymphocyte and monocyte differentiation. It induces myeloma and plasmacytoma growth and induces nerve cells differentiation Acts on B-cells, T-cells, hepatocytes, hematopoietic progenitor cells and cells of the CNS. IL-6 is also considered a myokine, a cytokine produced from muscle, and is elevated in response to muscle contraction. IL-6 has been shown to interact with interleukin-6 receptor and glycoprotein 130. Additionally, IL-6 is involved in hematopoiesis, bone metabolism, and cancer progression, and has been defined an essential role in directing transition from innate to acquired immunity.

### Immunogen information

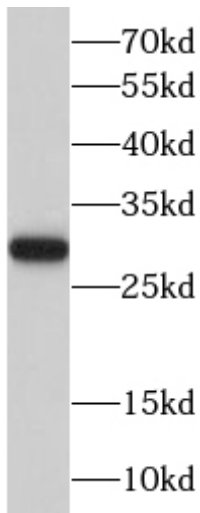
Immunogen:	interleukin 6(interferon, beta 2)
Synonyms:	B cell stimulatory factor 2, BSF 2, BSF2, CDF, CTL differentiation factor, HGF, HSF, Hybridoma growth factor, IFN beta 2, IFNB2, IL 6, IL6, IL-6, Interferon beta 2, Interleukin 6
Calculated MW:	24 kDa
Uniprot ID :	P05231

### Application

Specificity:	Human, Mouse, Rat; other species are not tested. Please decide the specificity by homology
Tested Application:	ELISA, WB, IHC
Recommended dilution:	WB: 1:500-1:1000; IHC: 1:50-1:200
Image:	



Immunohistochemistry of paraffin-embedded human tonsillitis tissue slide using FNab04282(IL6 Antibody) at dilution of 1:200



Recombinant protein were subjected to SDS PAGE followed by western blot with FNab04282(IL6 Antibody) at dilution of 1:600