

anti- MMP20 antibody

Product Information

Catalog No.:	FNab05239
Size:	100 μ g
Form:	liquid
Purification:	Immunogen affinity purified
Purity:	\geq 95% as determined by SDS-PAGE
Host:	Rabbit
IsoType:	IgG
Storage:	PBS with 0.02% sodium azide and 50% glycerol pH 7.3 , -20 $^{\circ}$ C for 24 months (Avoid repeated freeze / thaw cycles.)

Background

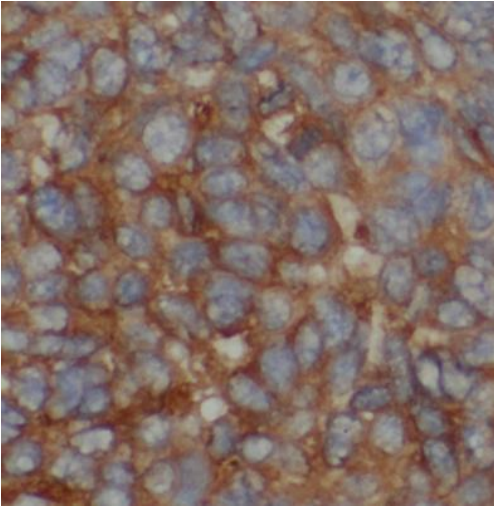
Degrades amelogenin, the major protein component of the enamel matrix and two of the macromolecules characterizing the cartilage extracellular matrix: aggrecan and the cartilage oligomeric matrix protein(COMP). May play a central role in tooth enamel formation.

Immunogen information

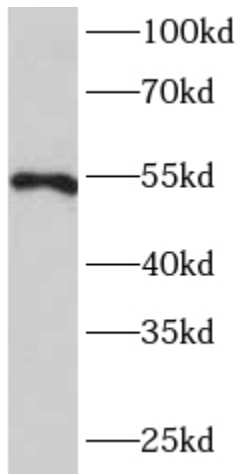
Immunogen:	matrix metalloproteinase 20
Synonyms:	Enamel metalloproteinase, Enamelysin, matrix metalloproteinase 20, Matrix metalloproteinase 20, MMP 20, MMP20
Calculated MW:	54 kDa
Uniprot ID :	O60882

Application

Specificity:	Human, Mouse, Rat; other species are not tested. Please decide the specificity by homology
Tested Application:	ELISA, WB, IHC, IF
Recommended dilution:	WB: 1:500-1:2000; IHC: 1:20-1:200; IF: 1:10-1:100
Image:	



Immunohistochemistry of paraffin-embedded human liver cancer using FNab05239(MMP20 antibody) at dilution of 1:50



mouse brain tissue were subjected to SDS PAGE followed by western blot with FNab05239(MMP20 antibody) at dilution of 1:1000