



## anti- STBD1 antibody

### Product Information

|               |   |
|---------------|---|
| Catalog No.:  | FNab08314   |
| Size:         | 100 $\mu$ g   |
| Form:         | liquid  |
| Purification: | Immunogen affinity purified   |
| Purity:       | $\geq 95\%$ as determined by SDS-PAGE   |
| Host:         | Rabbit  |
| IsoType:      | IgG   |
| Storage:      | PBS with 0.02% sodium azide and 50% glycerol pH 7.3 , -20 $^{\circ}$ C for 24 months (Avoid repeated freeze / thaw cycles.) |

### Background

Acts as a cargo receptor for glycogen. Delivers its cargo to an autophagic pathway called glycopagy, resulting in the transport of glycogen to lysosomes.

### Immunogen information

|                |  |
|----------------|--|
| Immunogen:     | starch binding domain 1  |
| Synonyms:      | Genethonin 1, GENEX3414, GENX 3414, starch binding domain 1, STBD1 |
| Calculated MW: | 40 kDa   |
| Uniprot ID :   | O95210   |

### Application

|                       |  |
|-----------------------|--|
| Specificity:          | Human, Mouse, Rat; other species are not tested. Please decide the specificity by homology |
| Tested Application:   | ELISA, WB, IP  |
| Recommended dilution: | WB: 1:500-1:2000; IP: 1:500-1:2000   |
| Image:                |  |



FineTest

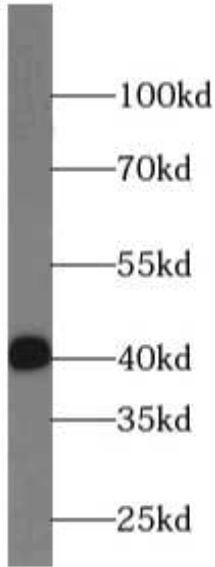
**Wuhan Fine Biotech Co.,Ltd.**

C6-323 Biolake, No. 666 Gaoxin Ave.

East Lake High-tech Development District

Wuhan City, Hubei, China (Zip code 430072)

Tel: 0086-027-87384275 Fax:0086-027-87800889



mouse skeletal muscle tissue were subjected to SDS PAGE followed by western blot with FNab08314(STBD1 antibody) at dilution of 1:1000