



## anti- $\beta$ -ENaC antibody

### Product Information

Catalog No.:	FNab09767
Size:	100 $\mu$ g
Form:	liquid
Purification:	Immunogen affinity purified
Purity:	$\geq$ 95% as determined by SDS-PAGE
Host:	Rabbit
IsoType:	IgG
Storage:	PBS with 0.02% sodium azide and 50% glycerol pH 7.3 , -20 $^{\circ}$ C for 24 months (Avoid repeated freeze / thaw cycles.)

### Background

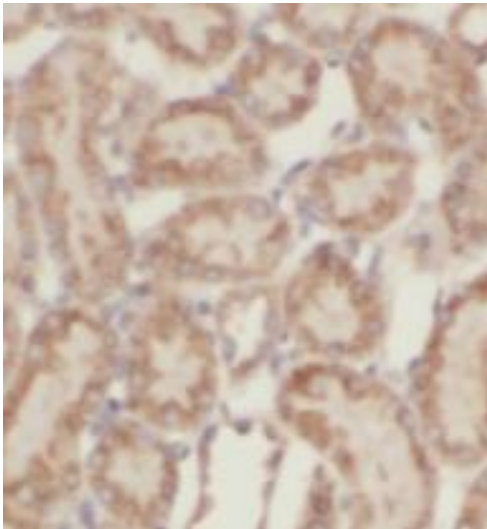
SCNN1B, also named as SCNEB, ENaCB, Beta-NaCH and Beta-ENaC, belongs to the amiloride-sensitive sodium channel(TC 1.A.6) family and SCNN1B subfamily. Sodium permeable non-voltage-sensitive ion channel is inhibited by the diuretic amiloride. SCNN1B mediates the electrodiffusion of the luminal sodium(and water, which follows osmotically) through the apical membrane of epithelial cells. It controls the reabsorption of sodium in kidney, colon, lung and sweat glands. SCNN1B plays a role in taste perception.

### Immunogen information

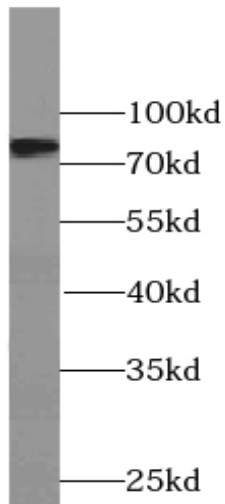
Immunogen:	sodium channel, nonvoltage-gated 1, beta
Synonyms:	Beta ENaC, Beta NaCH, ENaCb, ENaCbeta, SCNEB, SCNN1B, $\beta$ ENaC, $\beta$ ENaC
Calculated MW:	78 kDa
Uniprot ID :	P51168

### Application

Specificity:	Human, Mouse, Rat; other species are not tested. Please decide the specificity by homology
Tested Application:	ELISA, WB, IHC
Recommended dilution:	WB: 1:200-1:2000; IHC: 1:20-1:200
Image:	



Immunohistochemistry of paraffin-embedded human kidney tissue slide using FNab09767( $\beta$ -ENaC Antibody) at dilution of 1:200



PC-3 cells were subjected to SDS PAGE followed by western blot with FNab09767( $\beta$ -ENaC antibody) at dilution of 1:500