



anti- GLUT1 antibody

Product Information

Catalog No.:	FNab09873
Size:	100 μ g
Form:	liquid
Purification:	protein A+G purified
Purity:	\geq 95% as determined by SDS-PAGE
Host:	Mouse
IsoType:	IgG1
Storage:	PBS with 0.02% sodium azide and 50% glycerol pH 7.3 , -20 $^{\circ}$ C for 24 months (Avoid repeated freeze / thaw cycles.)

Background

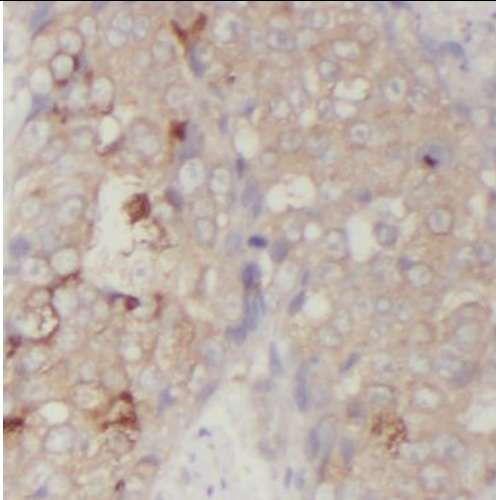
Facilitative glucose transporter. This isoform may be responsible for constitutive or basal glucose uptake. Has a very broad substrate specificity; can transport a wide range of aldoses including both pentoses and hexoses.

Immunogen information

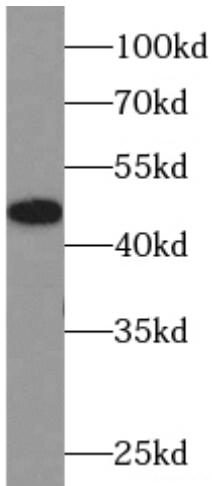
Immunogen:	solute carrier family 2(facilitated glucose transporter), member 1
Synonyms:	DYT17, DYT18, GLUT, GLUT 1, GLUT1, HepG2 glucose transporter, PED, SLC2A1
Calculated MW:	45 kDa
Uniprot ID :	P11166

Application

Specificity:	Human, Mouse; other species are not tested. Please decide the specificity by homology
Tested Application:	ELISA, WB, IHC
Recommended dilution:	WB: 1:200-1:2000; IHC: 1:20-1:1000
Image:	



Immunohistochemistry of paraffin-embedded human lung cancer tissue slide using FNab09873(SLC2A1, GLUT1 Antibody) at dilution of 1:200



Hela cells were subjected to SDS PAGE followed by western blot with FNab09873(SLC2A1, GLUT1 antibody) at dilution of 1:1000