

anti- alpha-synuclein antibody

Product Information

Catalog No.:	FNab09891
Size:	100 μ g
Form:	liquid
Purification:	protein A+G purified
Purity:	\geq 95% as determined by SDS-PAGE
Host:	Mouse
IsoType:	IgG1
Storage:	PBS with 0.02% sodium azide and 50% glycerol pH 7.3 , -20 $^{\circ}$ C for 24 months (Avoid repeated freeze / thaw cycles.)

Background

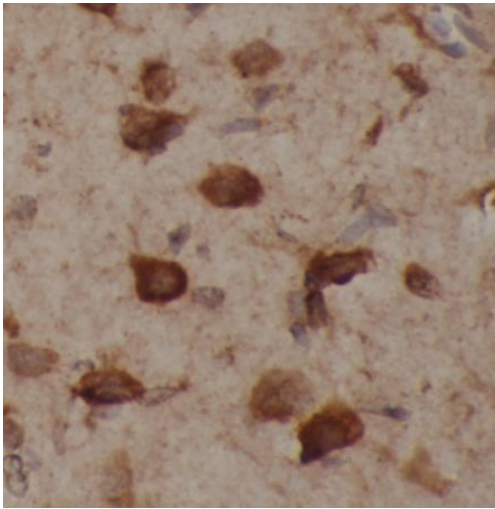
Alpha-synuclein is a member of the synuclein family, which also includes beta- and gamma-synuclein. Synucleins are abundantly expressed in the brain and alpha- and beta-synuclein inhibit phospholipase D2 selectively. SNCA may serve to integrate presynaptic signaling and membrane trafficking. Defects in SNCA have been implicated in the pathogenesis of Parkinson disease. SNCA peptides are a major component of amyloid plaques in the brains of patients with Alzheimer's disease. Alternatively spliced transcripts encoding different isoforms have been identified for this gene.

Immunogen information

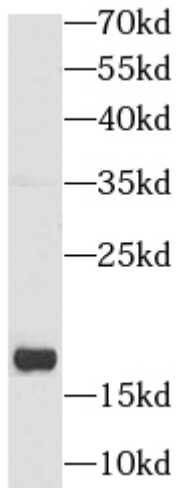
Immunogen:	synuclein, alpha (non A4 component of amyloid precursor)
Synonyms:	Alpha synuclein, NACP, PARK1, PARK4, SNCA
Calculated MW:	18 kDa
Uniprot ID :	P37840

Application

Specificity:	Human, Mouse, Rat; other species are not tested. Please decide the specificity by homology
Tested Application:	ELISA, IHC, WB
Recommended dilution:	WB: 1:500 - 1:2000; IHC: 1:500 - 1:2000
Image:	



Immunohistochemistry of paraffin-embedded mouse brain using FNab09891 (SNCA antibody) at dilution of 1:1000



mouse brain tissue were subjected to SDS PAGE followed by western blot with FNab09891(SNCA antibody) at dilution of 1:1000