

## anti- Collagen Type I antibody

### Product Information

Catalog No.:	FNab09910
Size:	100 $\mu$ g
Form:	liquid
Purification:	protein A+G purified
Purity:	$\geq$ 95% as determined by SDS-PAGE
Host:	Mouse
IsoType:	IgG1
Storage:	PBS with 0.02% sodium azide and 50% glycerol pH 7.3 , -20 $^{\circ}$ C for 24 months (Avoid repeated freeze / thaw cycles.)

### Background

This gene encodes the pro-alpha2 chain of type I collagen whose triple helix comprises two alpha1 chains and one alpha2 chain. Type I is a fibril-forming collagen found in most connective tissues and is abundant in bone, cornea, dermis and tendon. Mutations in this gene are associated with osteogenesis imperfecta types I-IV, Ehlers-Danlos syndrome type VIIB, recessive Ehlers-Danlos syndrome Classical type, idiopathic osteoporosis, and atypical Marfan syndrome. Symptoms associated with mutations in this gene, however, tend to be less severe than mutations in the gene for the alpha1 chain of type I collagen (COL1A1) reflecting the different role of alpha2 chains in matrix integrity. Three transcripts, resulting from the use of alternate polyadenylation signals, have been identified for this gene.

### Immunogen information

Immunogen:	collagen, type I, alpha 2
Synonyms:	Alpha 2 type I collagen, COL1A2, Collagen alpha 2(I) chain, Collagen Type I, collagen, type I, alpha 2, OI4
Calculated MW:	
Uniprot ID :	P08123

### Application

Specificity:	Human; other species are not tested. Please decide the specificity by homology
Tested Application:	ELISA, IHC
Recommended dilution:	IHC: 1:2000 - 1:8000
Image:	



FineTest

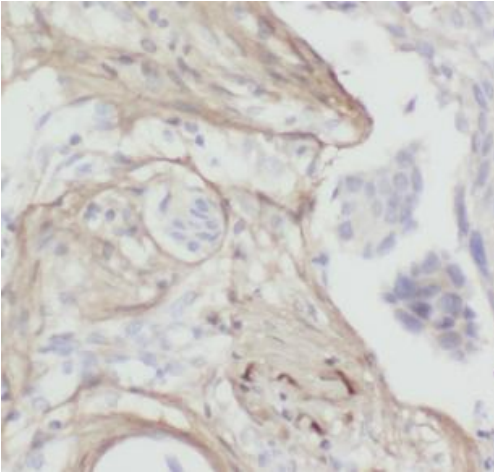
**Wuhan Fine Biotech Co.,Ltd.**

C6-323 Biolake, No. 666 Gaoxin Ave.

East Lake High-tech Development District

Wuhan City, Hubei, China (Zip code 430072)

Tel: 0086-027-87384275 Fax:0086-027-87800889



Immunohistochemistry of paraffin-embedded human breast cancer tissue slide using FNab09910( COL1A2 Antibody) at dilution of 1:5000