

## anti- SLC16A7 antibody

### Product Information

Catalog No.:	FNab09923
Size:	100 $\mu$ g
Form:	liquid
Purification:	Immunogen affinity purified
Purity:	$\geq$ 95% as determined by SDS-PAGE
Host:	Rabbit
IsoType:	IgG
Storage:	PBS with 0.02% sodium azide and 50% glycerol pH 7.3 , -20 $^{\circ}$ C for 24 months (Avoid repeated freeze / thaw cycles.)

### Background

This gene is a member of the monocarboxylate transporter family. Members in this family transport metabolites, such as lactate, pyruvate, and ketone bodies. The protein encoded by this gene catalyzes the proton-linked transport of monocarboxylates and has the highest affinity for pyruvate. This protein has been reported to be more highly expressed in prostate and colorectal cancer specimens when compared to control specimens. Alternative splicing results in multiple transcript variants.

### Immunogen information

Immunogen:	Solute carrier family 16 member 7
Synonyms:	MCT2, SLC16A7, monocarboxylate transporter 2
Calculated MW:	50kDa
Uniprot ID :	O60669

### Application

Specificity:	Human, Mouse, Rat; other species are not tested. Please decide the specificity by homology
Tested Application:	ELISA, WB
Recommended dilution:	WB: 1:500 - 1:2000
Image:	



FineTest

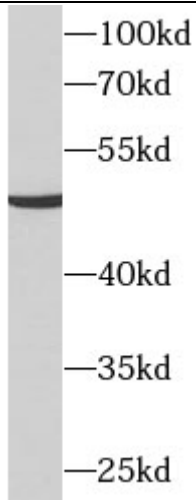
**Wuhan Fine Biotech Co.,Ltd.**

C6-323 Biolake, No. 666 Gaoxin Ave.

East Lake High-tech Development District

Wuhan City, Hubei, China (Zip code 430072)

Tel: 0086-027-87384275 Fax:0086-027-87800889



HepG2 cells were subjected to SDS PAGE followed by western blot with FNab09923 (SLC16A7 antibody) at dilution of 1:1000