



anti- Phospho- CREB1(S133) antibody

Product Information

Catalog No.:	FNab09948
Size:	100 μ g
Form:	liquid
Purification:	Immunogen affinity purified
Purity:	\geq 95% as determined by SDS-PAGE
Host:	Rabbit
IsoType:	IgG
Storage:	PBS with 0.02% sodium azide and 50% glycerol pH 7.3 , -20 $^{\circ}$ C for 24 months (Avoid repeated freeze / thaw cycles.)

Background

This gene encodes a transcription factor that is a member of the leucine zipper family of DNA binding proteins. This protein binds as a homodimer to the cAMP-responsive element, an octameric palindrome. The protein is phosphorylated by several protein kinases, and induces transcription of genes in response to hormonal stimulation of the cAMP pathway. Alternate splicing of this gene results in several transcript variants encoding different isoforms.

Immunogen information

Immunogen:	Phospho-CREB1-S133
Synonyms:	CREB, CREB-1
Calculated MW:	42kDa
Uniprot ID :	P16220

Application

Specificity:	Human; other species are not tested. Please decide the specificity by homology
Tested Application:	ELISA, WB, IF
Recommended dilution:	WB: 1:500 - 1:2000; IF: 1:50 - 1:200
Image:	



FineTest

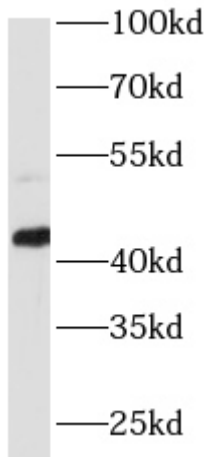
Wuhan Fine Biotech Co.,Ltd.

C6-323 Biolake, No. 666 Gaoxin Ave.

East Lake High-tech Development District

Wuhan City, Hubei, China (Zip code 430072)

Tel: 0086-027-87384275 Fax:0086-027-87800889



293T cells were subjected to SDS PAGE followed by western blot with FNab09948(Phospho- CREB1(S133) antibody) at dilution of 1:1000. 293T cells were treated by 10% FBS at 37°C for 30 minutes after serum-starvation overnight.